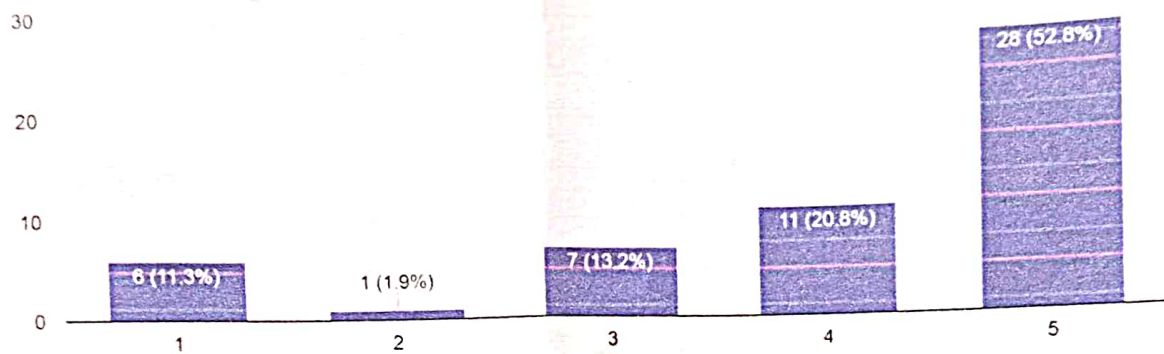


Administrative service at APIMR

The Grades are: 5: Highly satisfied/ 4: Somewhat satisfied/ 3: Neutral / 2: Somewhat dissatisfied/ 1: Very dissatisfied

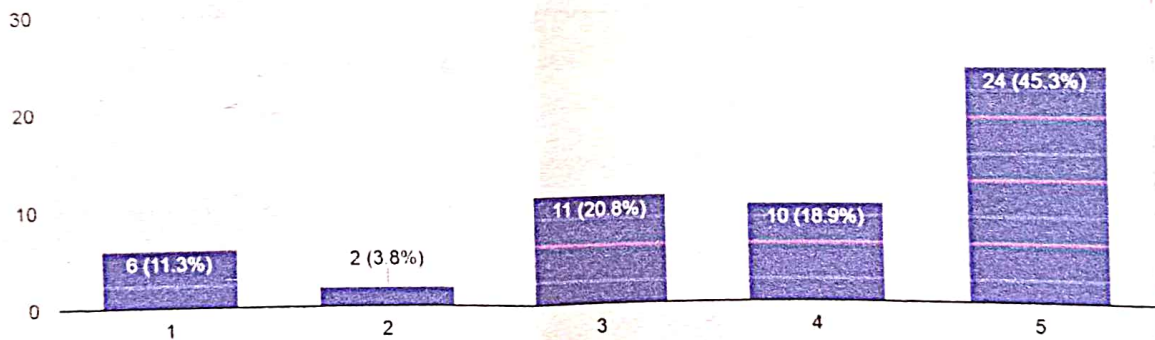
Service efficiency

53 responses



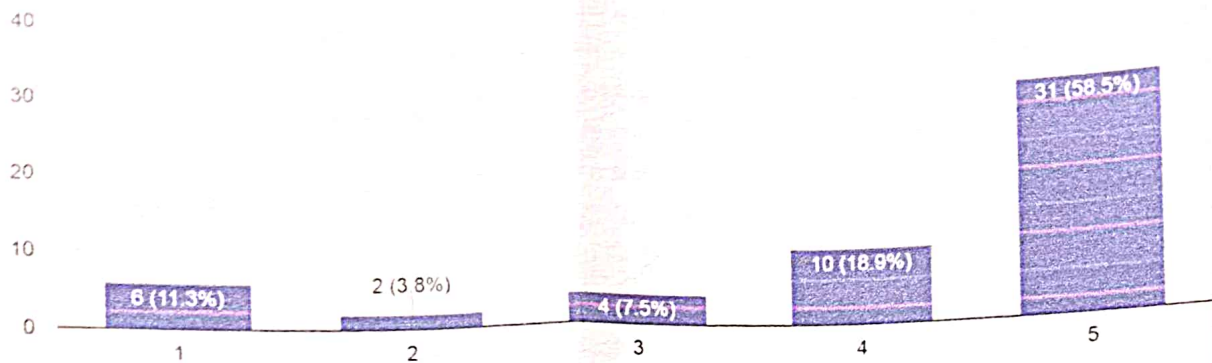
Staff Attitude

53 responses



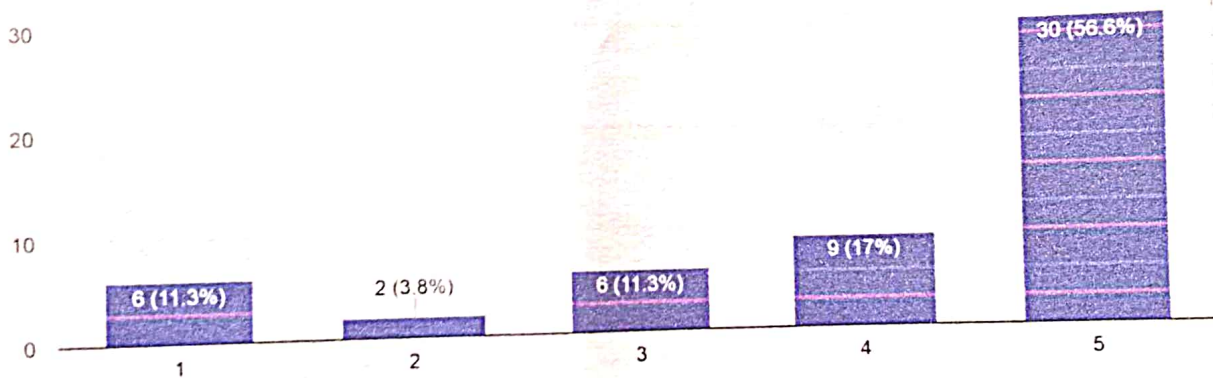
Staff Cooperativeness

53 responses



Timely providing / updating information by various means of communication

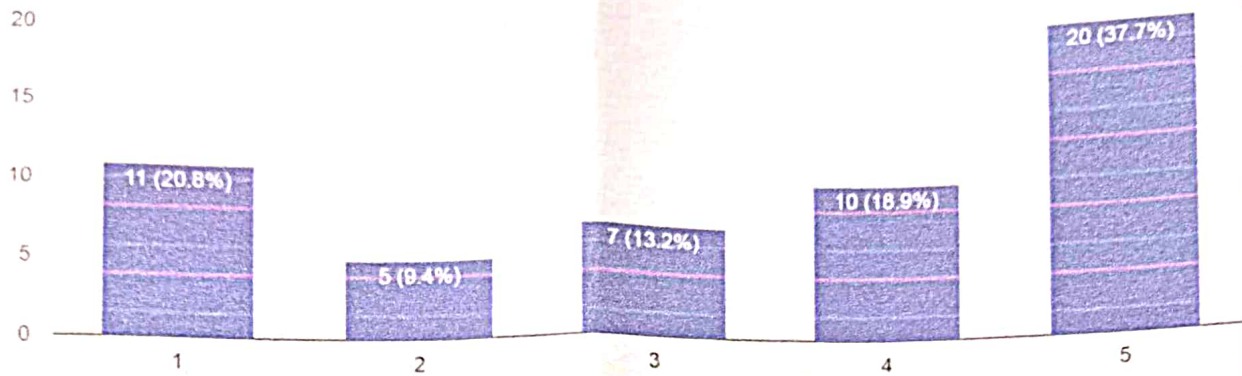
53 responses



Feedback on Infrastructure of APIMR

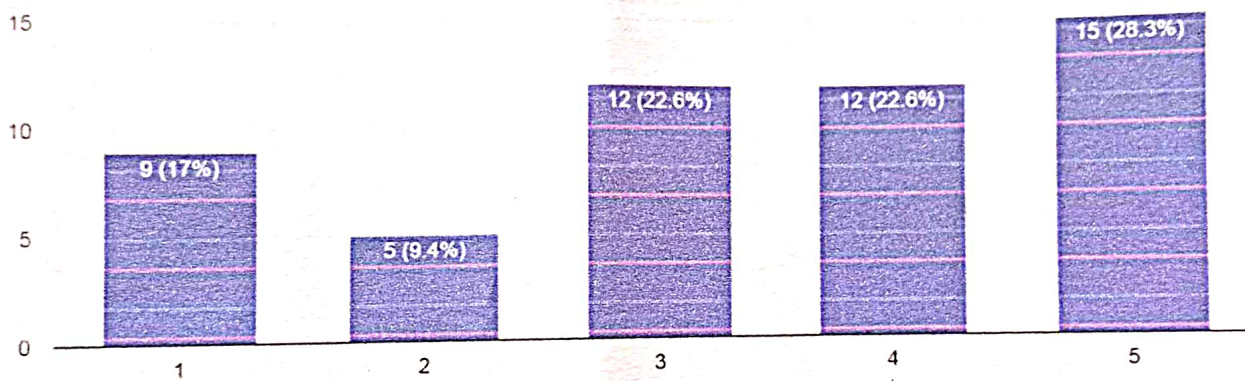
Parking facility

53 responses



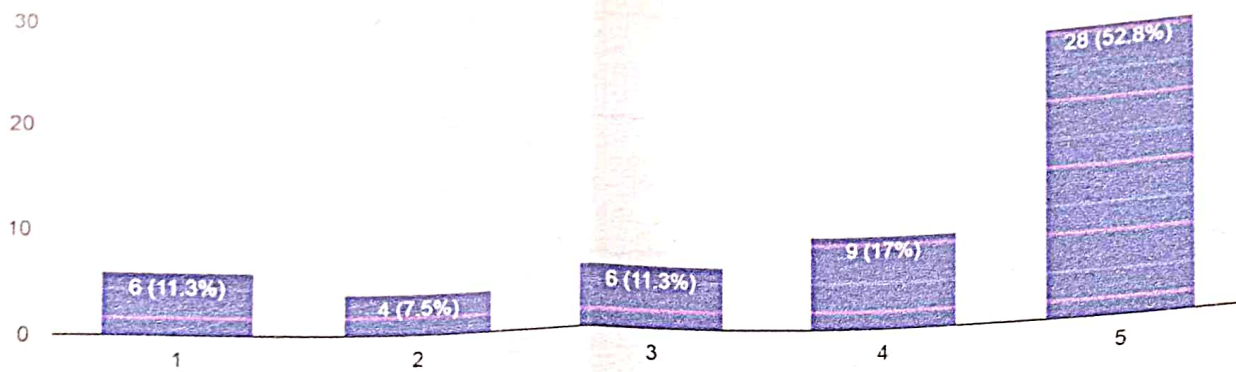
Cafeteria/Canteen facilities

53 responses



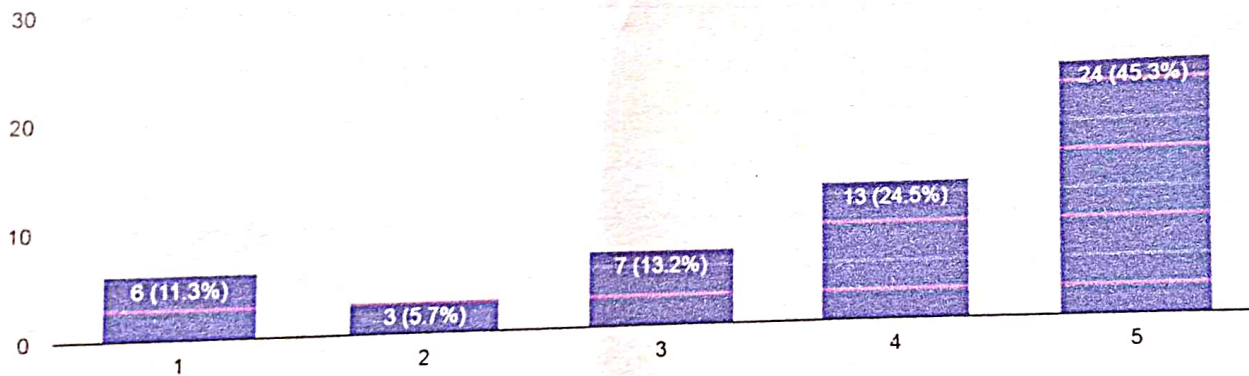
Library facilities

53 responses



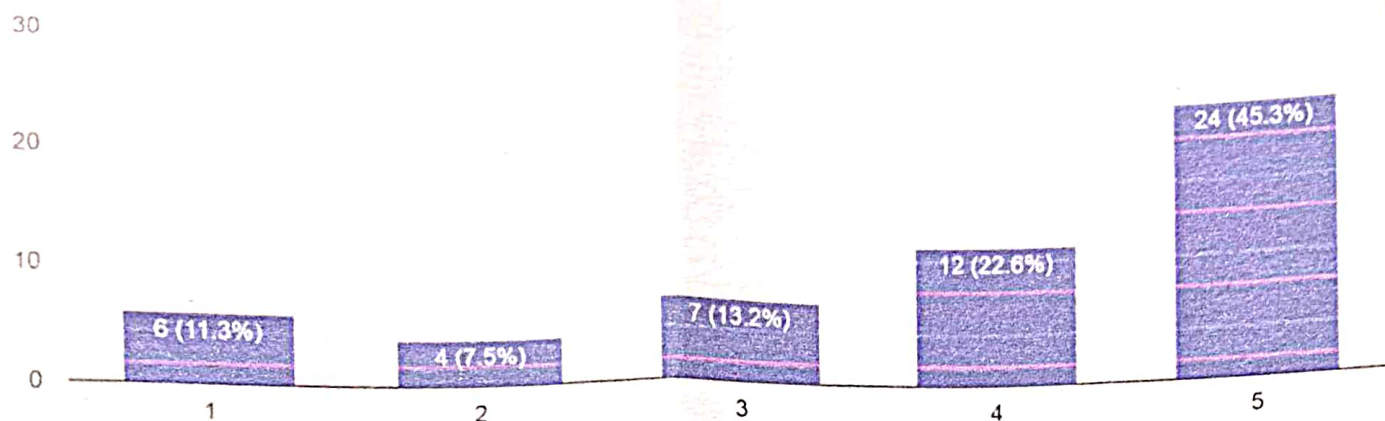
ICT (Information & Communication Technologies Facilities

53 responses



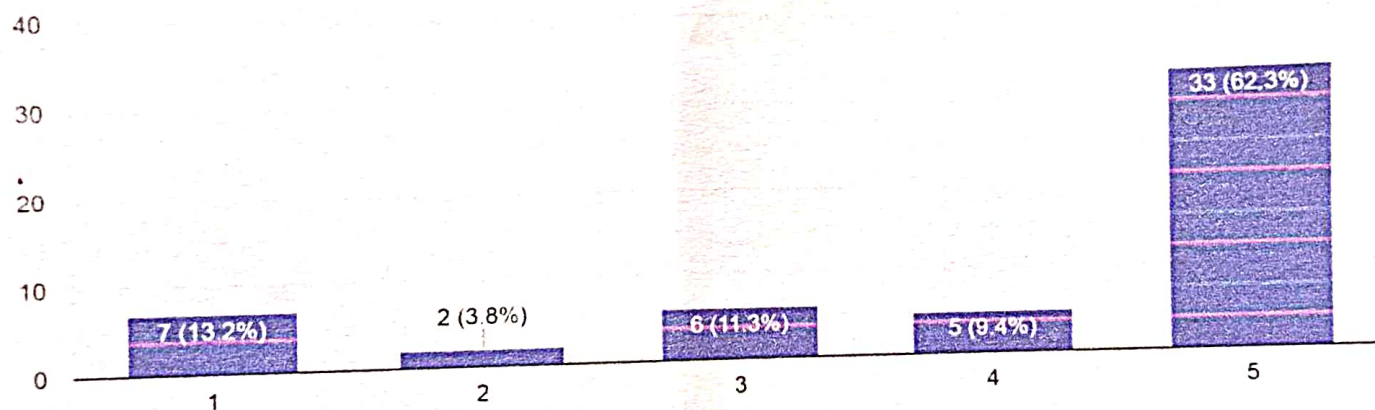
Power saving / generating Facilities

53 responses

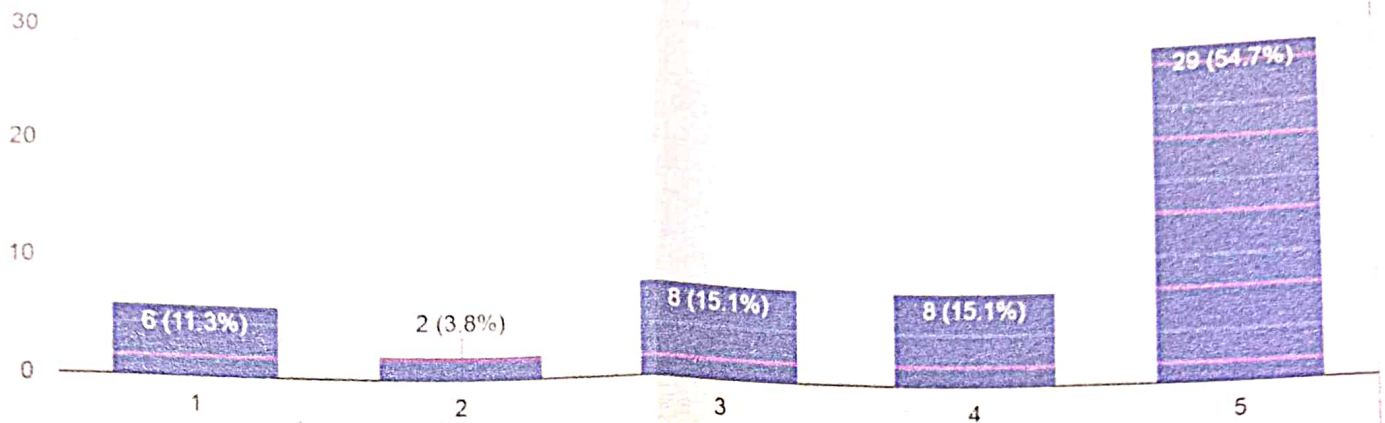


Cleanliness Facilities

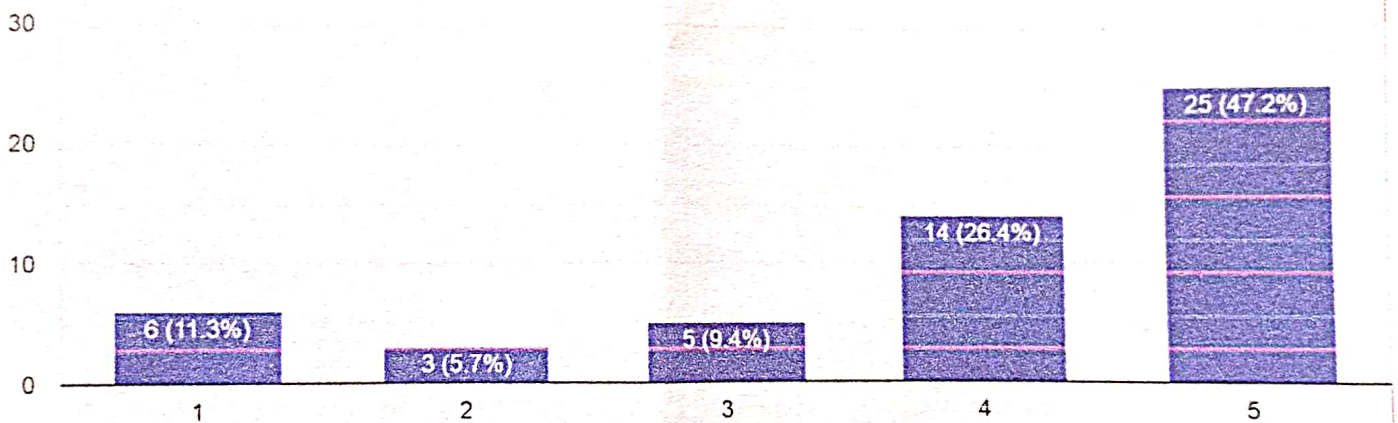
53 responses



Display of Vision, Mission, Core Values, Rules-regulation, various committees etc.
53 responses



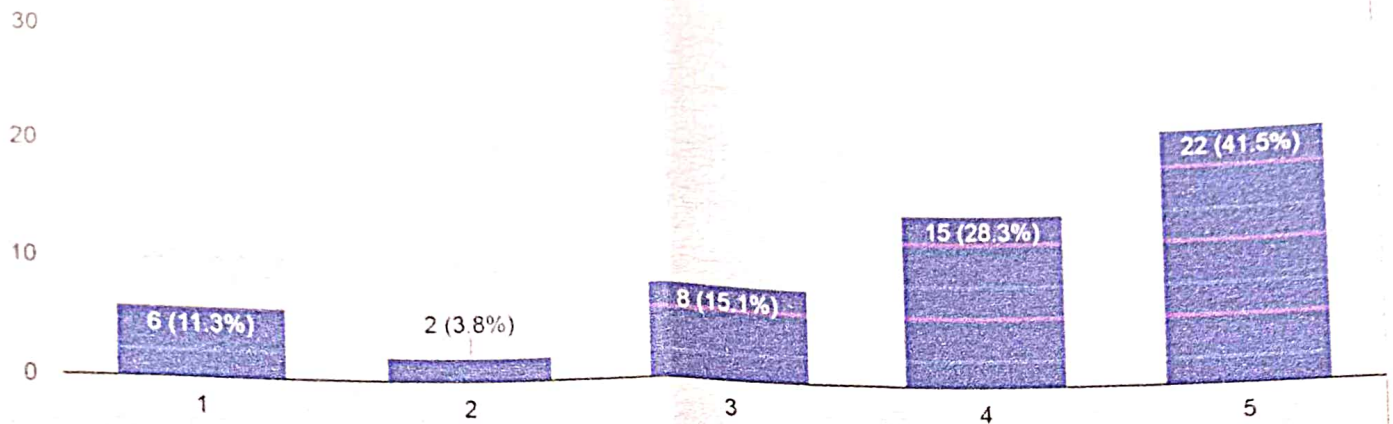
Overall improvement in infrastructure
53 responses



Feedback on progress in Activities

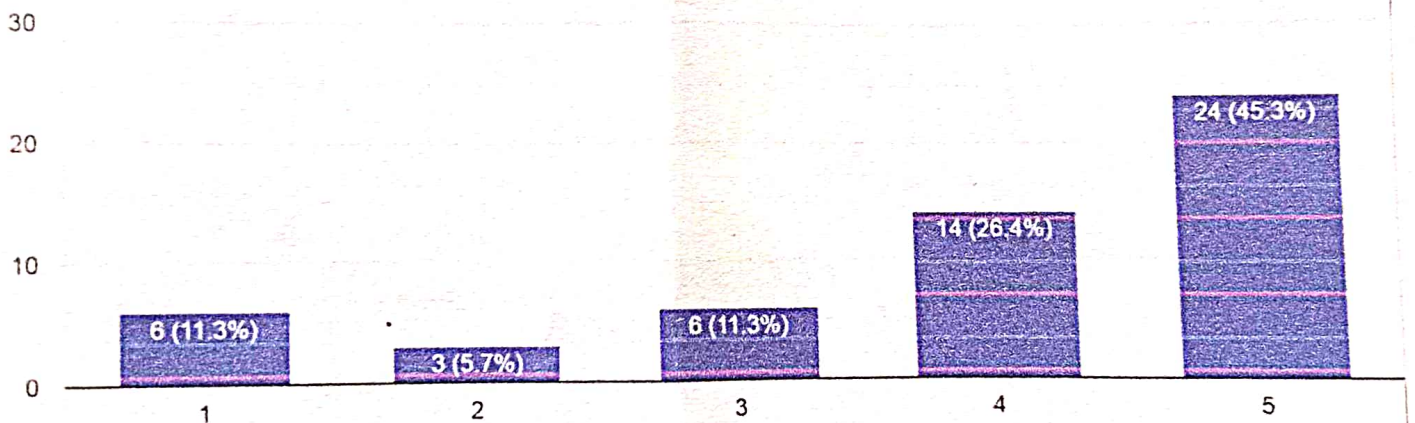
Guest lectures

53 responses



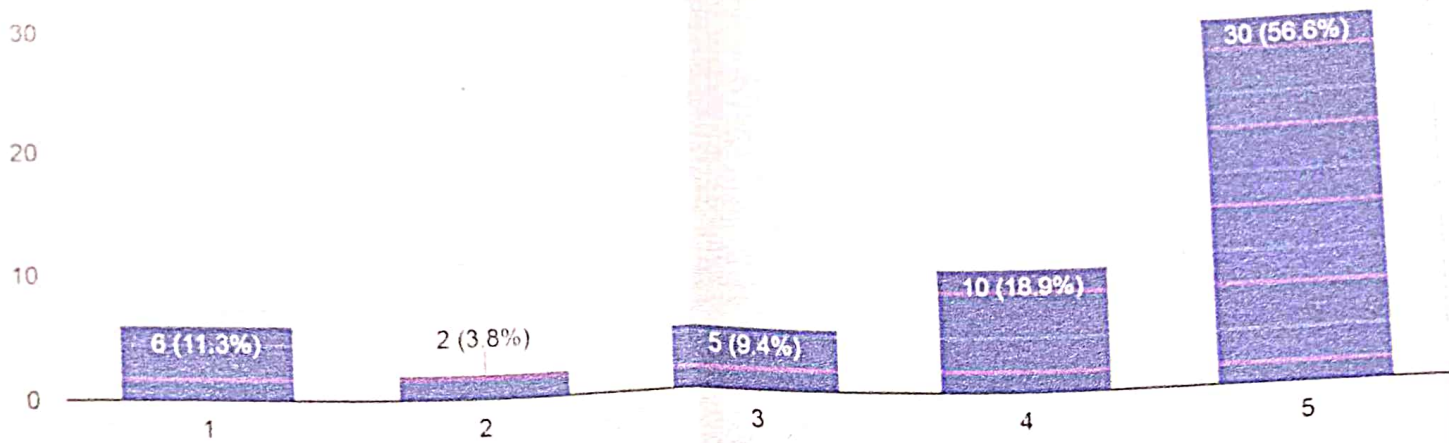
Seminars

53 responses



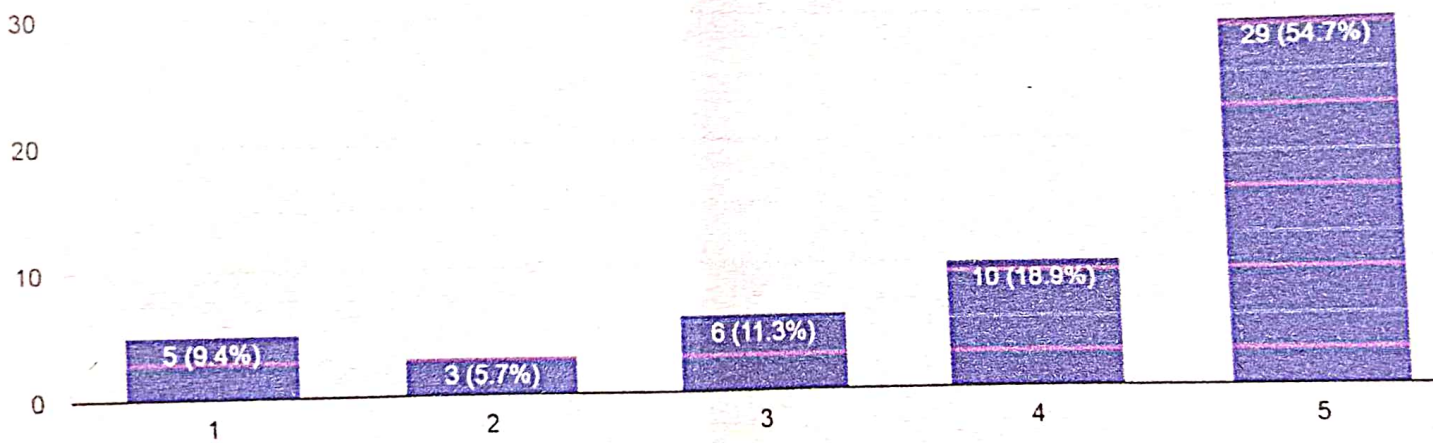
Support for projects/ dissertation

53 responses



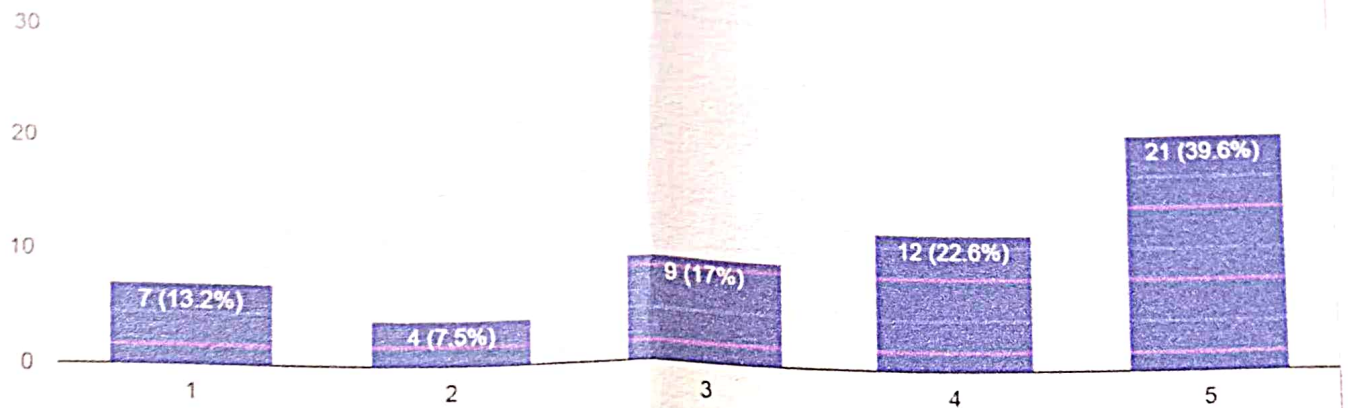
Cultural Activities

53 responses



Sports Activities

53 responses



Any other Suggestion

College staff is friendly and cooperative. They guide us very well and also provide a good guidance

All well and systematic

Very good Institute and staff

Some computers are not working properly and also having the internet issue while using them

Increase sports activities for students.

Provide more placement

Director

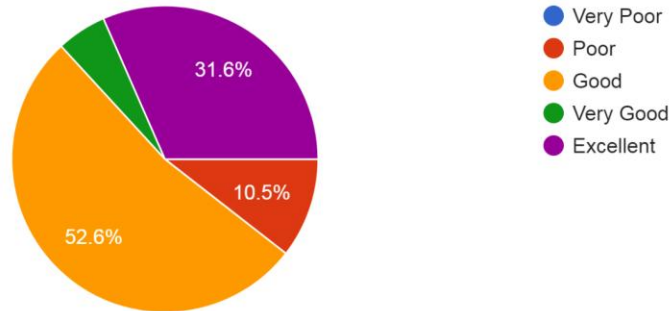
Shri Bhairavnath Shikshan Prasarak Mandal's
Adhalrao Patil Institute of Management & Research
A/P.Landewadi (Chinchodi), Tal.Ambegaon, Dist.Pune

SBSPMs Adhalrao Patil Institute of Management & Research

Parents' Feedback 2022-23

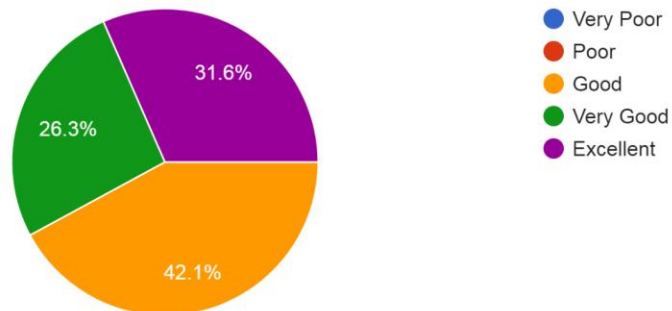
Admission procedure

19 responses



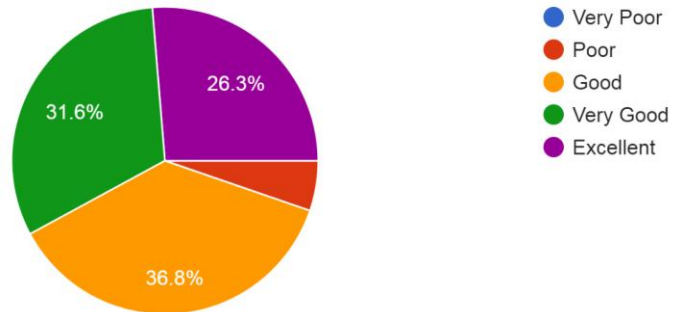
Infrastructure facility

19 responses



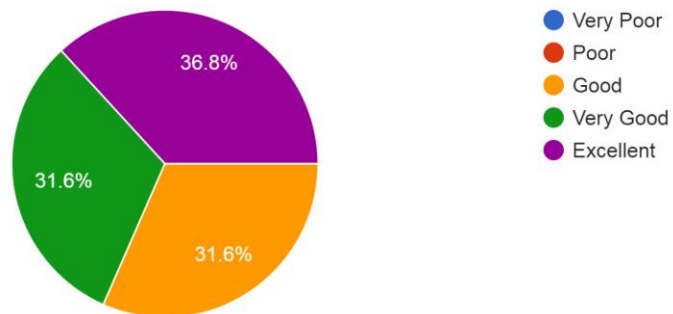
Work Culture observed by you and your Ward

19 responses



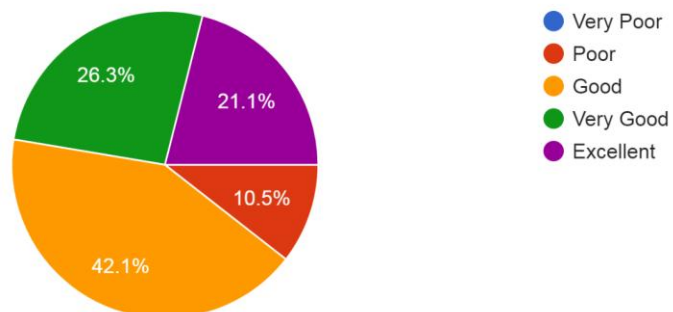
Teaching Quality experienced by your Ward

19 responses



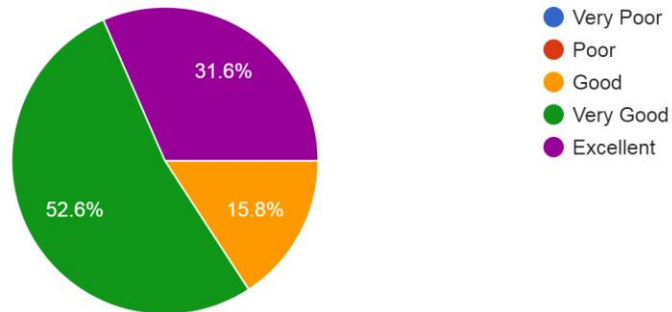
Canteen facility

19 responses



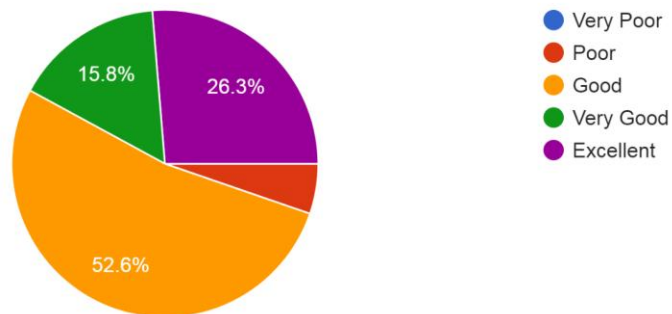
Library Facility

19 responses



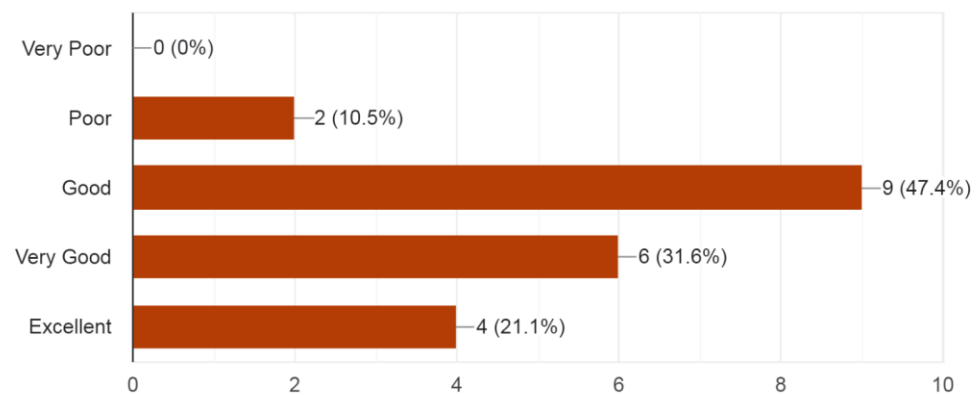
Sports and cultural activities

19 responses



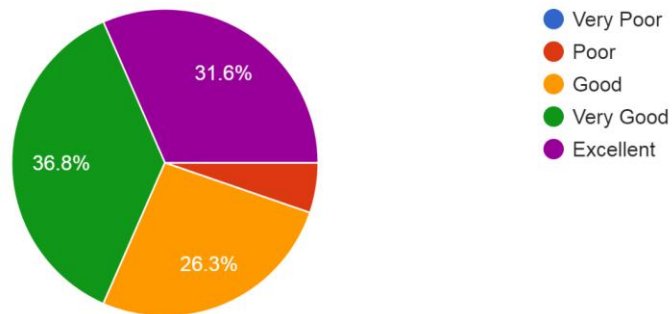
Student's counseling activities

19 responses



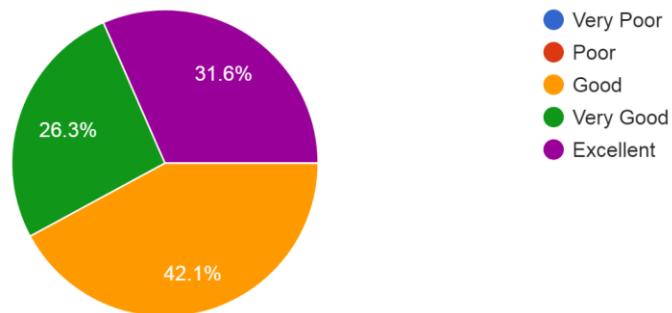
Use of Information and communication technology in the college

19 responses



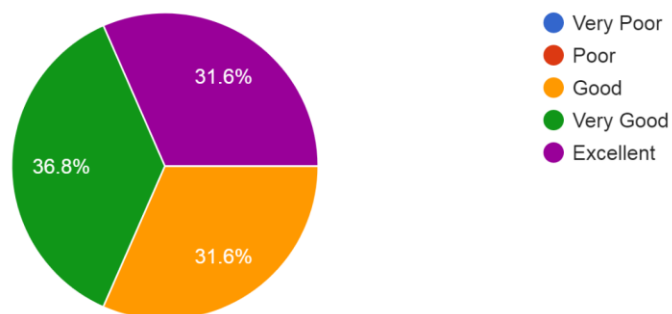
Academic Discipline (i.e timely conduct of lectures, practicals and related activities) observed by the Institute(*)

19 responses



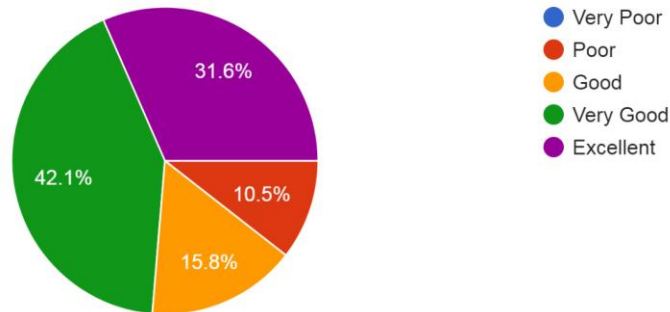
Improvement in soft skills, knowledge, ethics, morality, observed by you in your ward while studying in college

19 responses



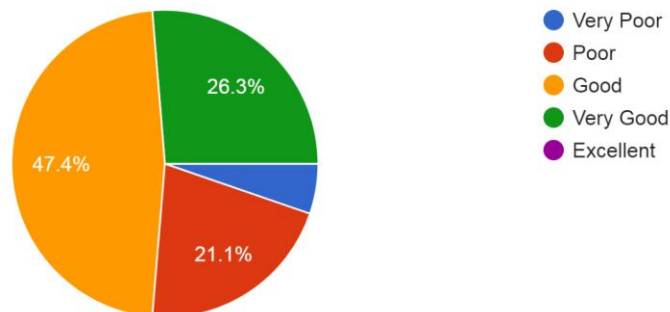
Examination system adopted by the college

19 responses



Placements

19 responses



Any suggestions to improve the Teaching-Learning, infrastructure, co-curricular aspects, etc.?


Institute should improve student and industrial interaction .

Increase placement assistance.

No suggestion

No any suggestions



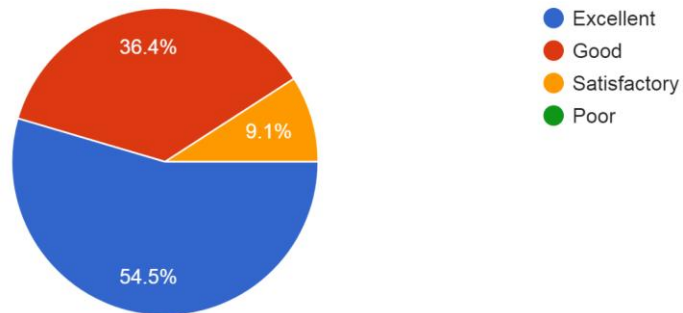

Director
Shri Bhairavnath Shikshan Prasarak Mandal's
Adhalrao Patil Institute of Management & Research
A/P. Landewadi (Chinchodi), Tal. Ambegaon, Dist. Pune

SBSPMs Adhalrao Patil Institute of Managemnt & Reserach Teacher's Feedback 2022-2023

A: About Syllabus

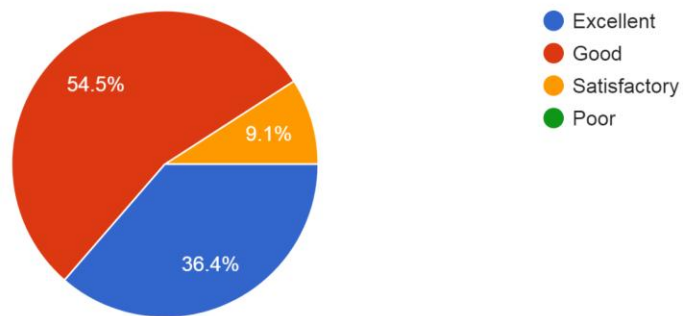
1.Is the syllabus designed to bridge the gap between academics and industry?

11 responses



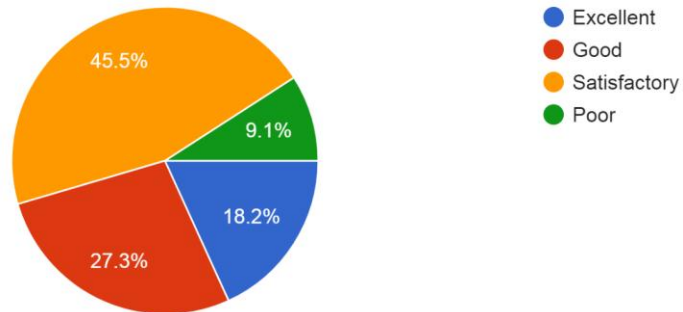
2.Is the syllabus designed to bridge the gap between Theory and Practical?

11 responses



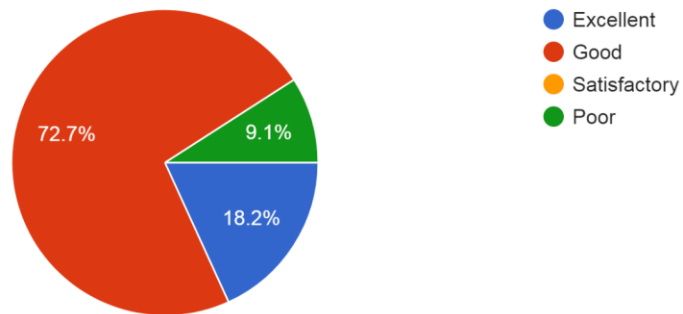
3. Is timely completion of syllabus possible for the students on online mode?

11 responses



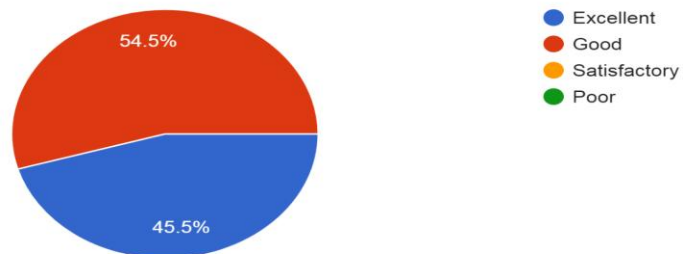
4. Does the syllabus provide freedom to adopt new techniques/strategies of testing and assessment of students?

11 responses



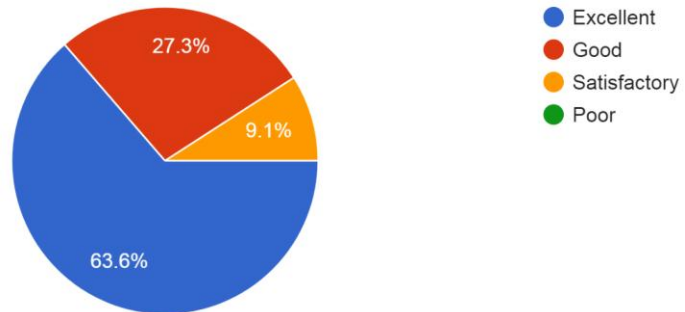
5. Does the syllabus cover modern & advanced topics?

11 responses



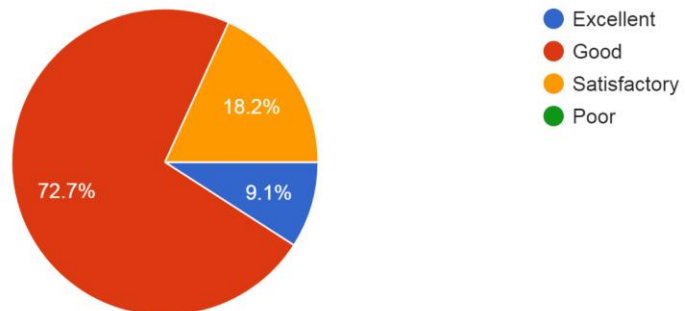
6.Are the objectives of the syllabus clearly indicated?

11 responses



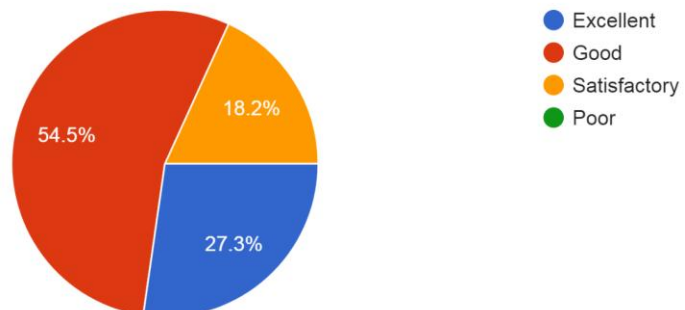
7.Are the contents challenging to teach?

11 responses



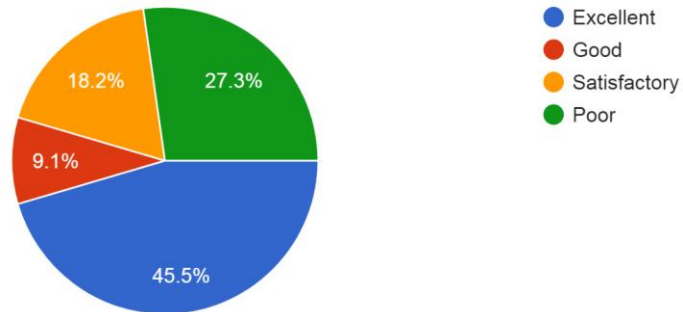
8. Is the syllabus designed in a way to improve Employability index?

11 responses



9. Is online Platform comfortable for Teaching & Learning Process?

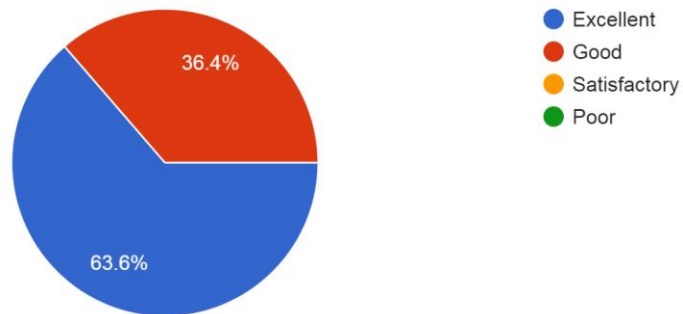
11 responses



B: About Institute

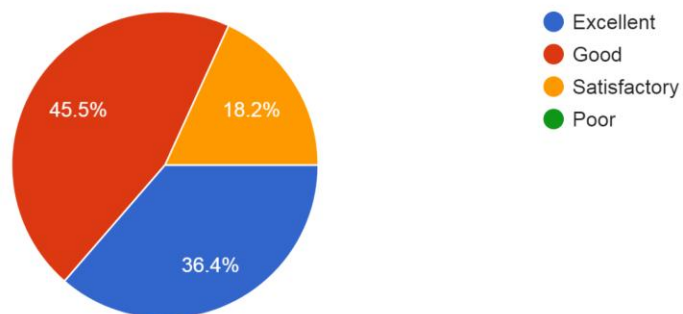
1. The availability of required Books in Library.

11 responses



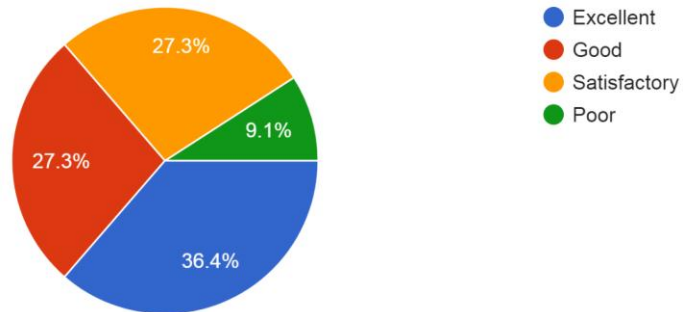
2. Freedom to adopt new techniques & research

11 responses



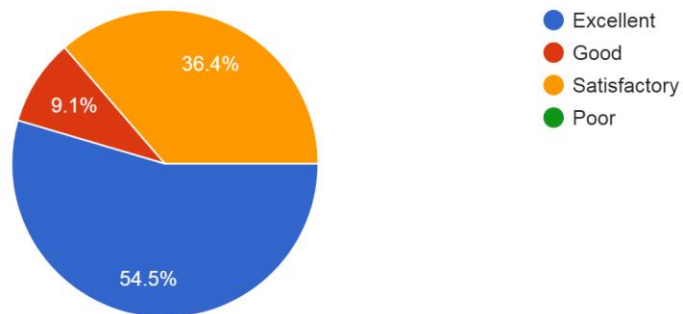
3. Opportunities & support provided by college for upgrading your skills & Qualification

11 responses



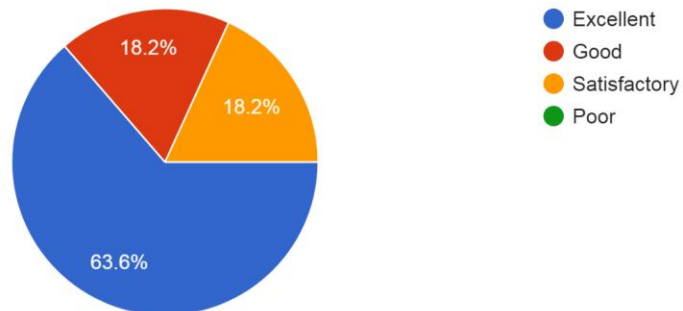
4. ICT facilities available in the college.

11 responses



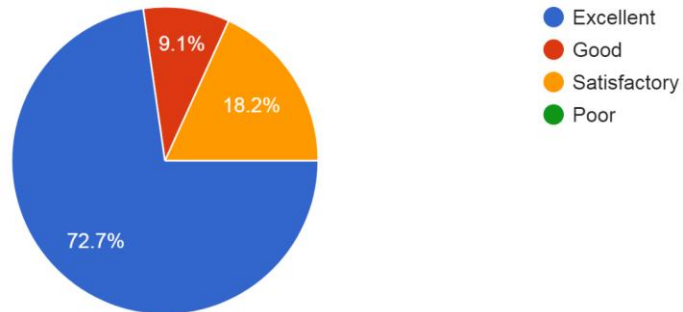
5. Cleanliness in classrooms, laboratories, toilets etc.

11 responses



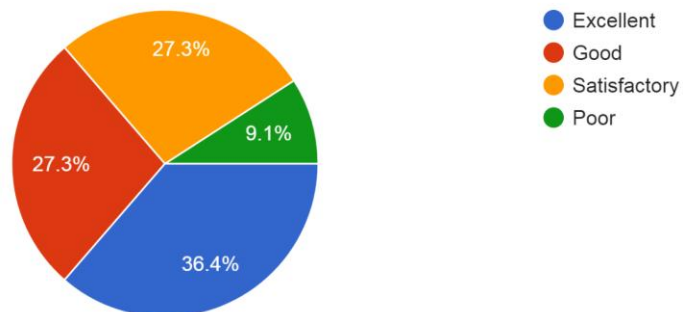
6. Cafeteria

11 responses



7. Faculty Welfare scheme

11 responses



8. Any other suggestions for improvement

- Discipline to be improved
- Required little bit more to coordinate
- Institute shall provide the financial assistance to the faculties in attending the various research conferences and faculty development programs.

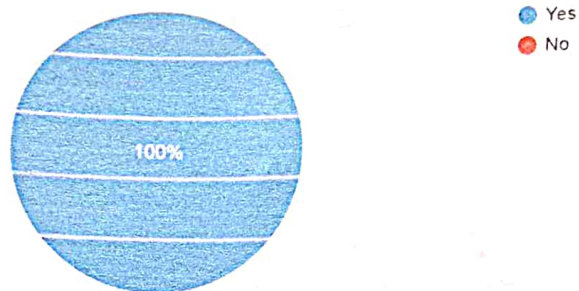



Director
Shri Bhairavnath Shikshan Prasarak Mandal's
Adhalrao Patil Institute of Management & Research
A/P. Landewadi (Chinchodi), Tal. Ambegaon, Dist. Pune

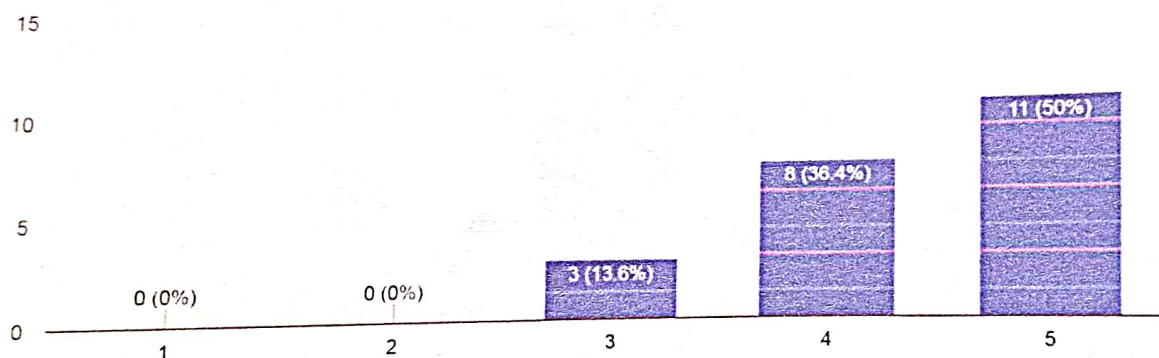
SBSPM's ADHALRAO PATIL INSTITUTE OF MANAGEMNT & RESEARCH
ALUMNI FEED BACK ANALYSIS (2022-23)

OPINION ABOUT APIMR

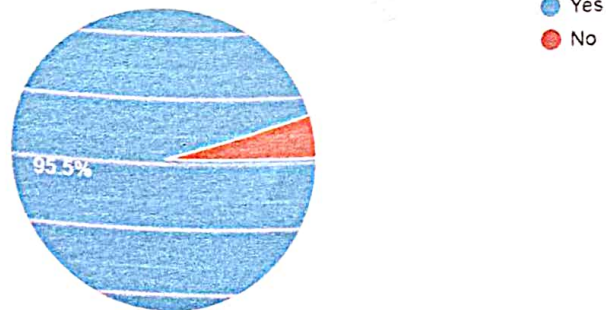
1. Do you feel proud to be associated with APIMR as Alumni?
22 responses



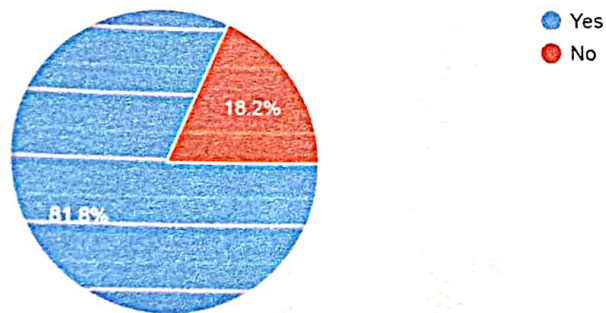
2. How do you rate development activities organized by the APIMR for your overall development?
22 responses



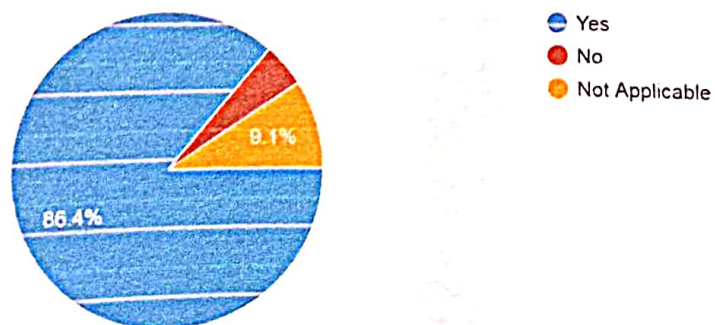
3. Are you willing to contribute to the development of the APIMR?
22 responses



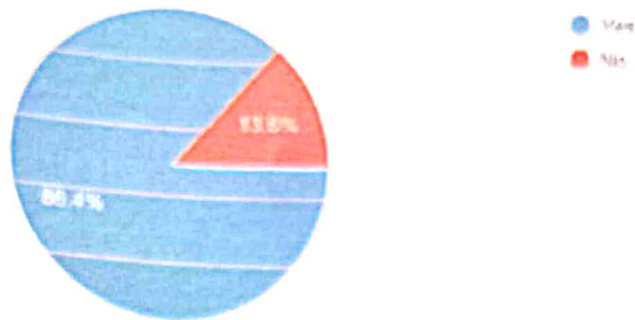
4. Has the APIMR provided ample on campus & off campus placement opportunities?
22 responses



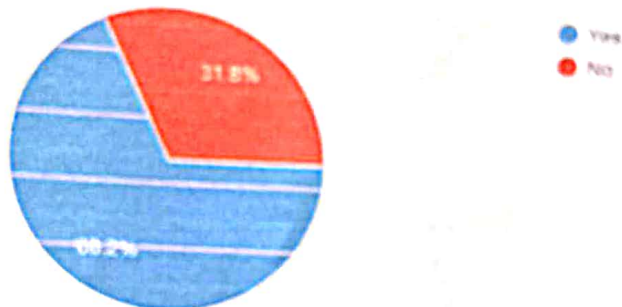
5. Were your grievances properly handled at the APIMR, if any?
22 responses



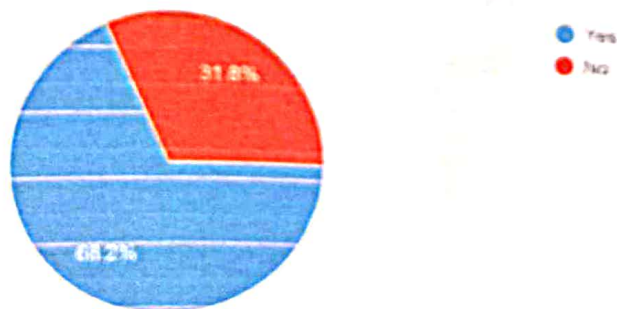
6. If you are invited to deliver a Guest Lecture / Special Talk / Motivational Session for your juniors, will you be interested?
22 responses



7. Are you a member of Alumni Association of APIMR?
22 responses



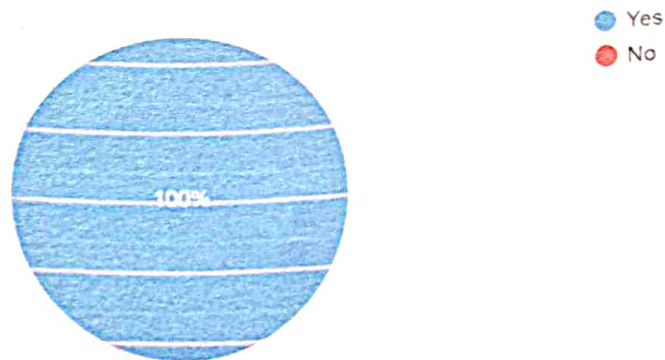
8. Have you participated in any of the Alumni meets organized at APIMR as of now?
22 responses



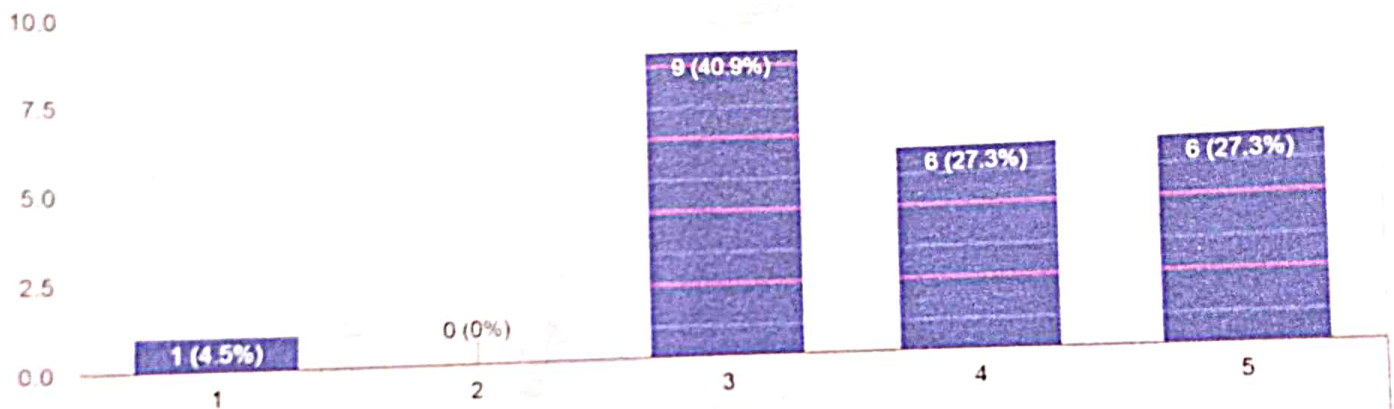
B) Feedback on Academics



1. Are the Syllabus/ Course contents revised at reasonable intervals by SP Pune University?
22 responses

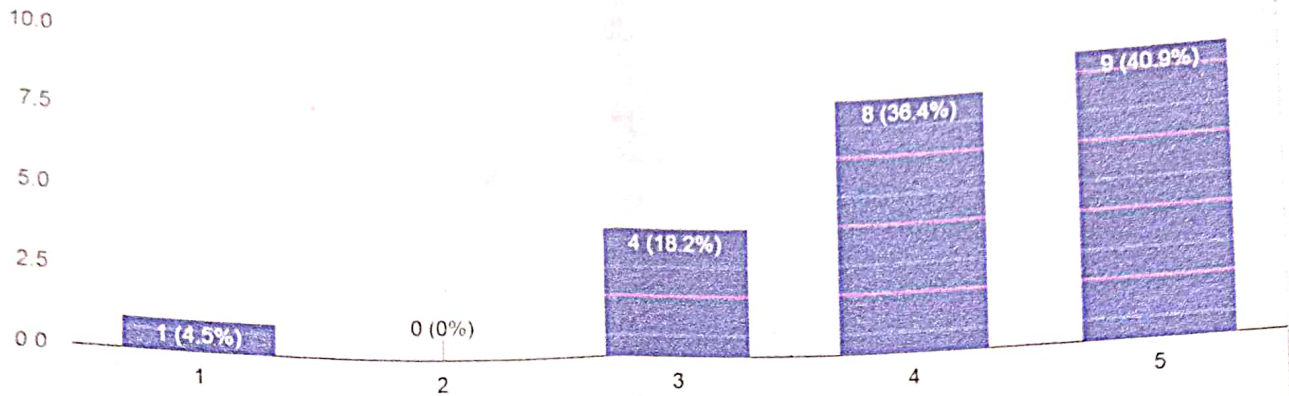


2. Applicability of MBA Revised Curriculum 2016/19 CBCGS & OBE Pattern in relation to your current (Job)/Professional life.
22 responses



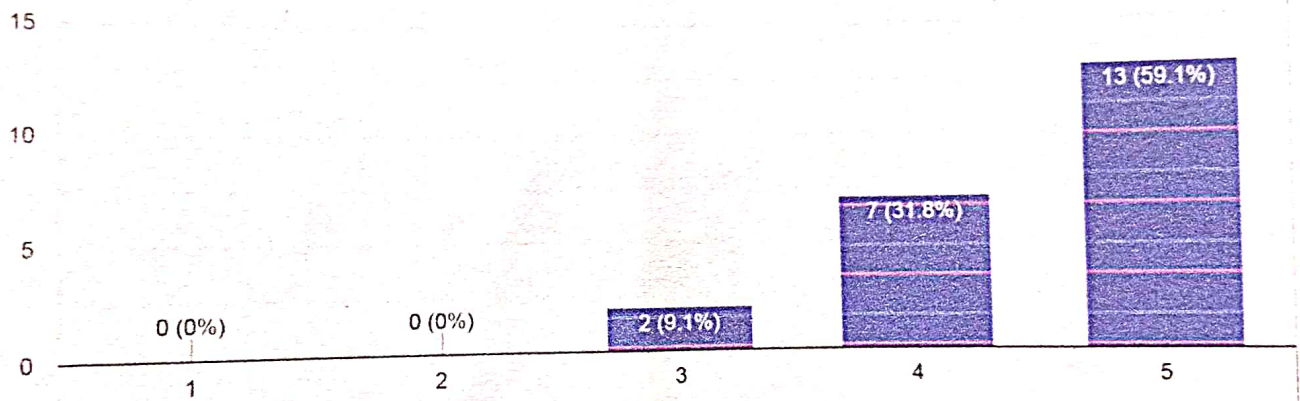
3. Improvements in Teaching learning methodologies like experimental teaching, participative teaching & casestudies/problem solving.

22 responses



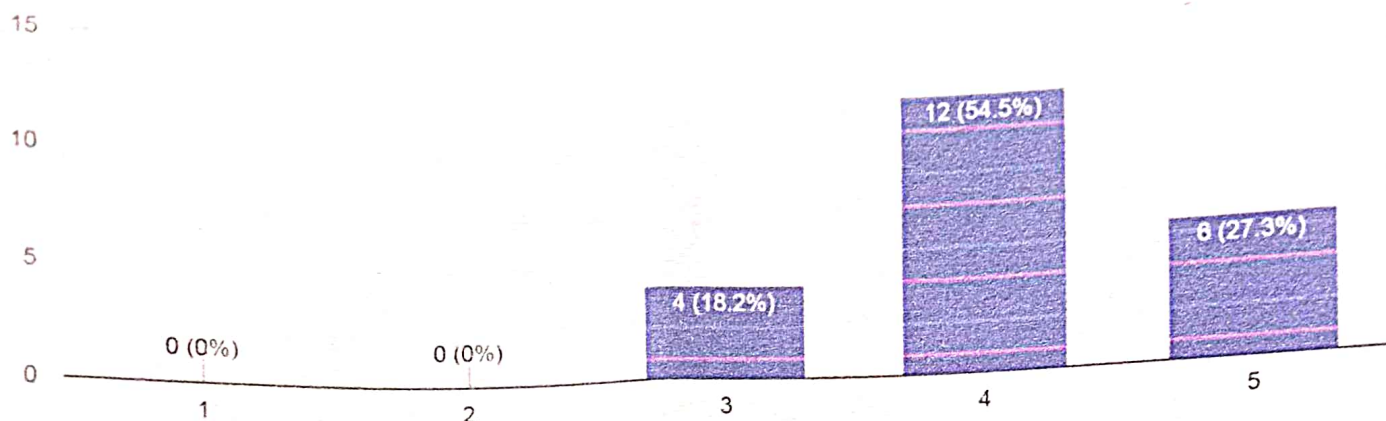
4. How do you rate the faculty?

22 responses



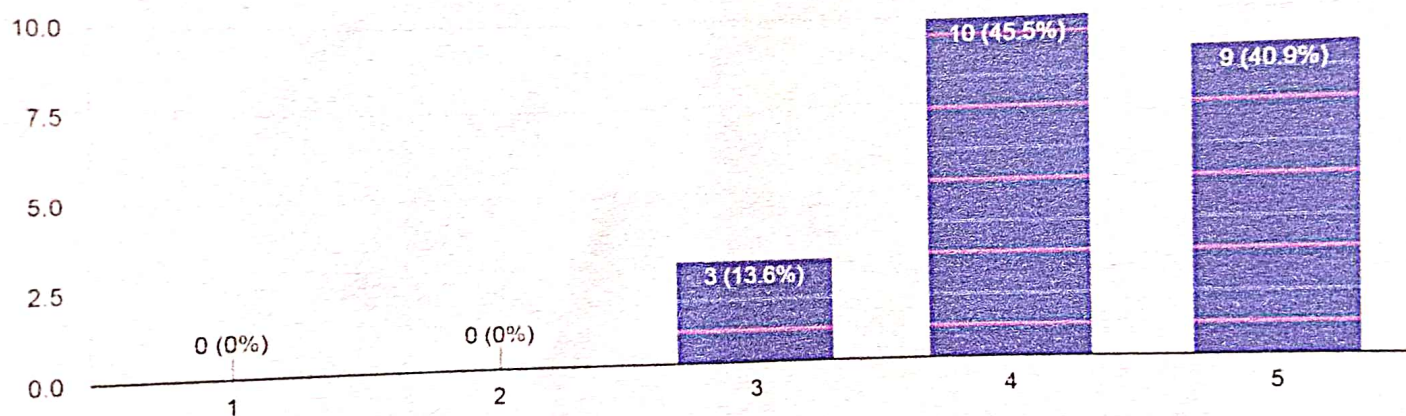
5. Development in Educational Resources such as ICT, e-Resources.

22 responses



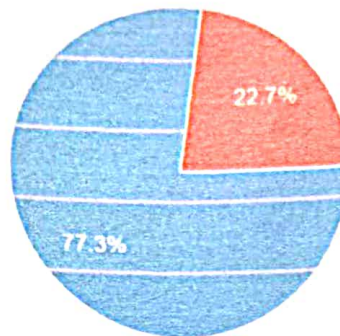
6. Overall academic rating of APIMR.

22 responses



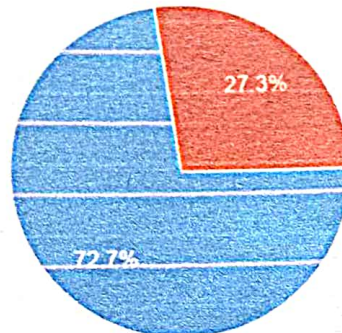
C) Administrative service at APIMR

1. Improvement in service efficiency.
22 responses



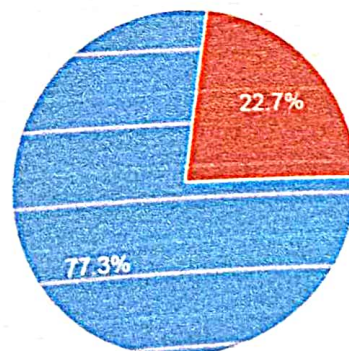
● Yes
● No

2. Improvement in staff Attitude
22 responses



● Yes
● No

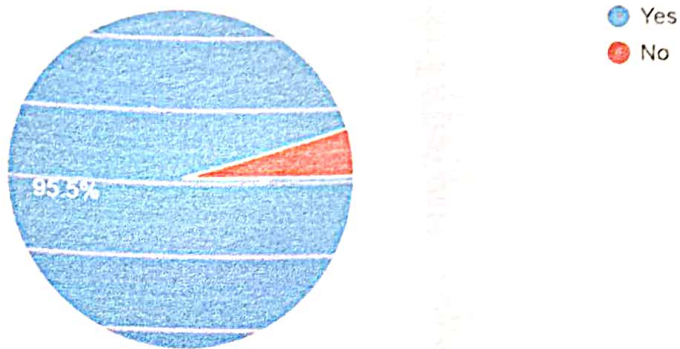
3. Improvement in staff Cooperativeness
22 responses



● Yes
● No



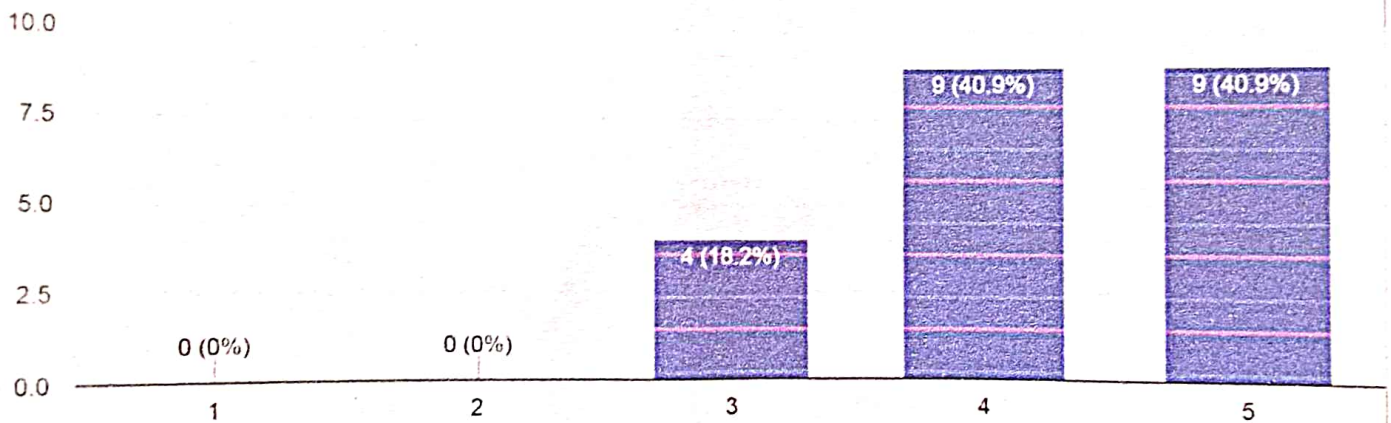
4. Timely providing / updating information by various means of communication.
22 responses



D) Feedback on progress in Activities

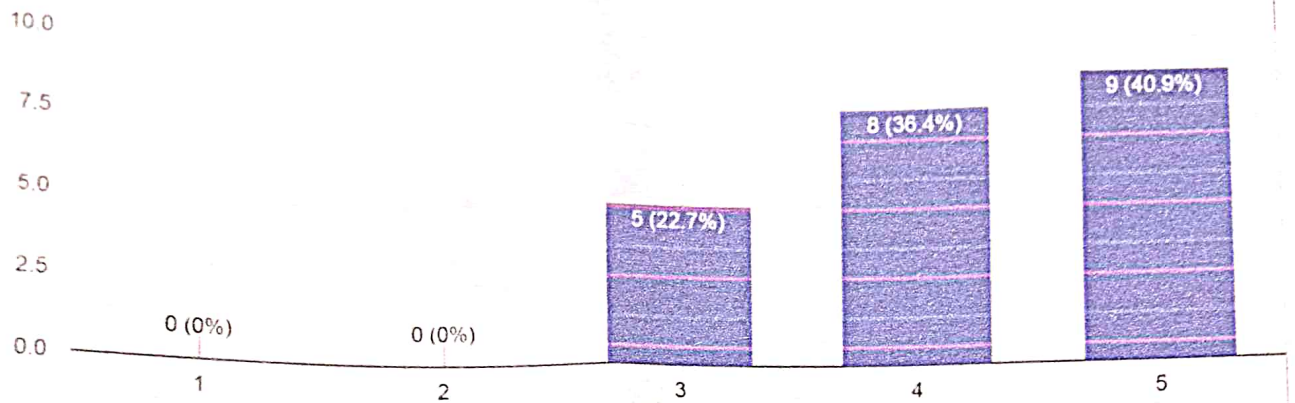
1. Guest lectures

22 responses



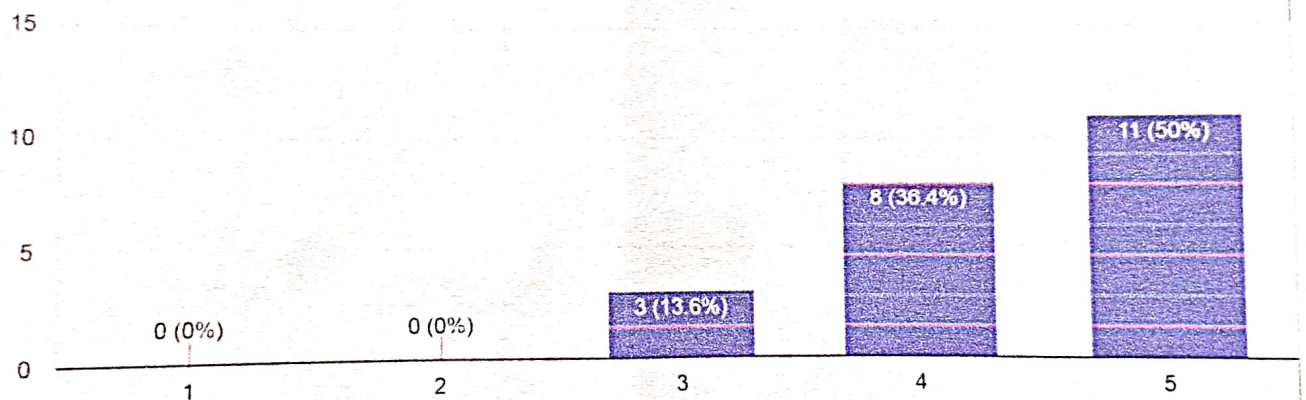
2. Seminars

22 responses



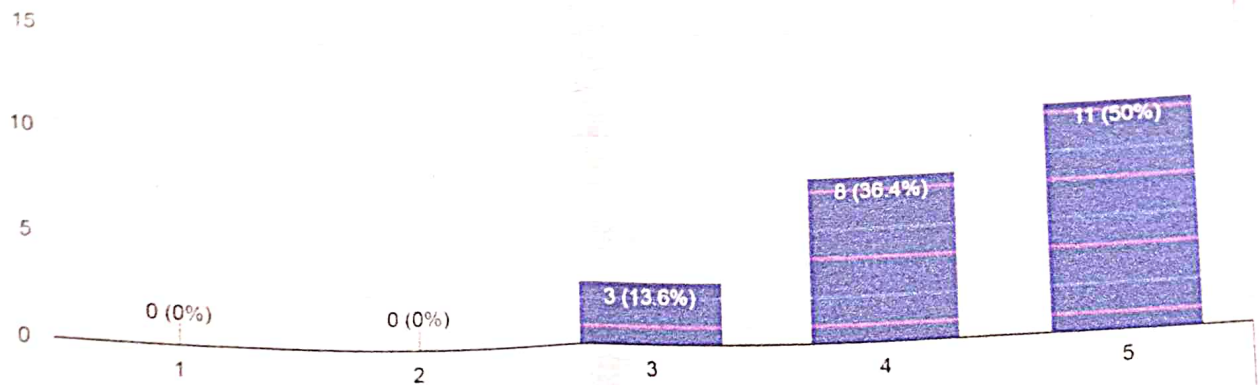
3. Support for projects/ dissertation

22 responses



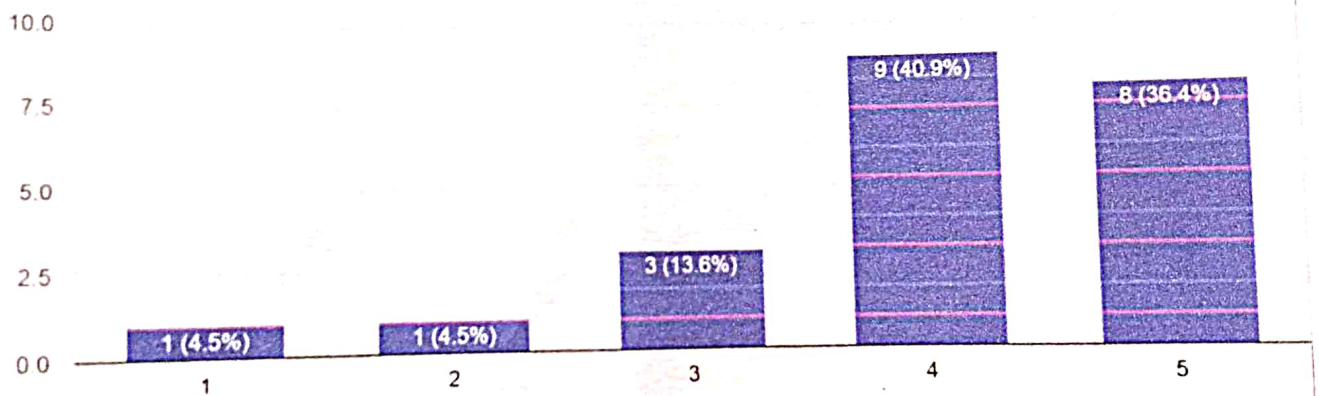
4. Cultural activities

22 responses



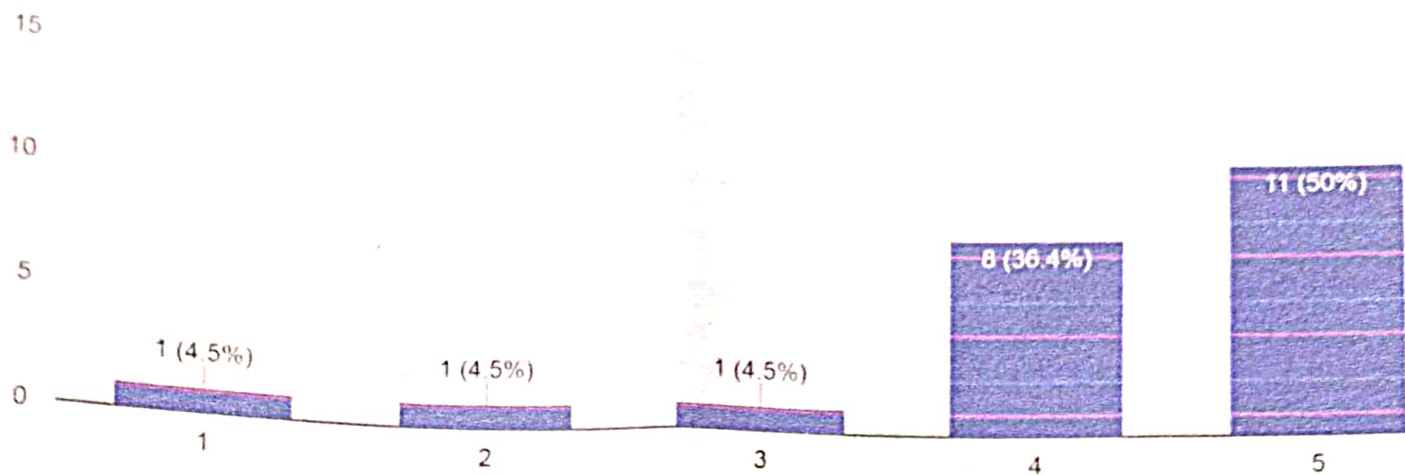
5. Sports

22 responses



6. Industrial visits

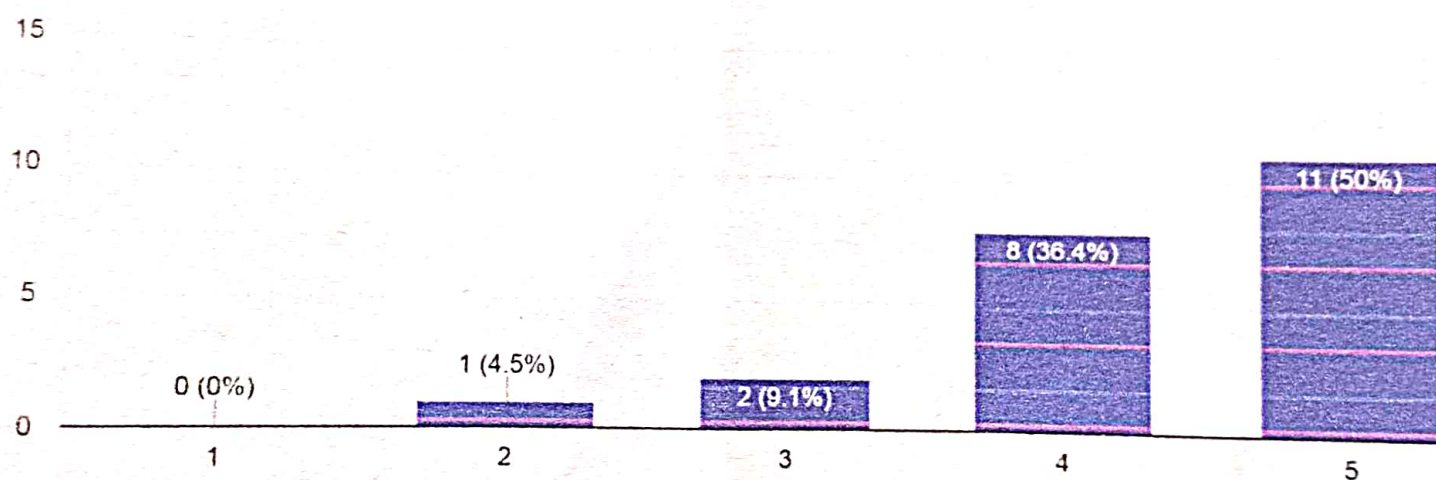
22 responses



E) Feedback on Infrastructure of APIMR

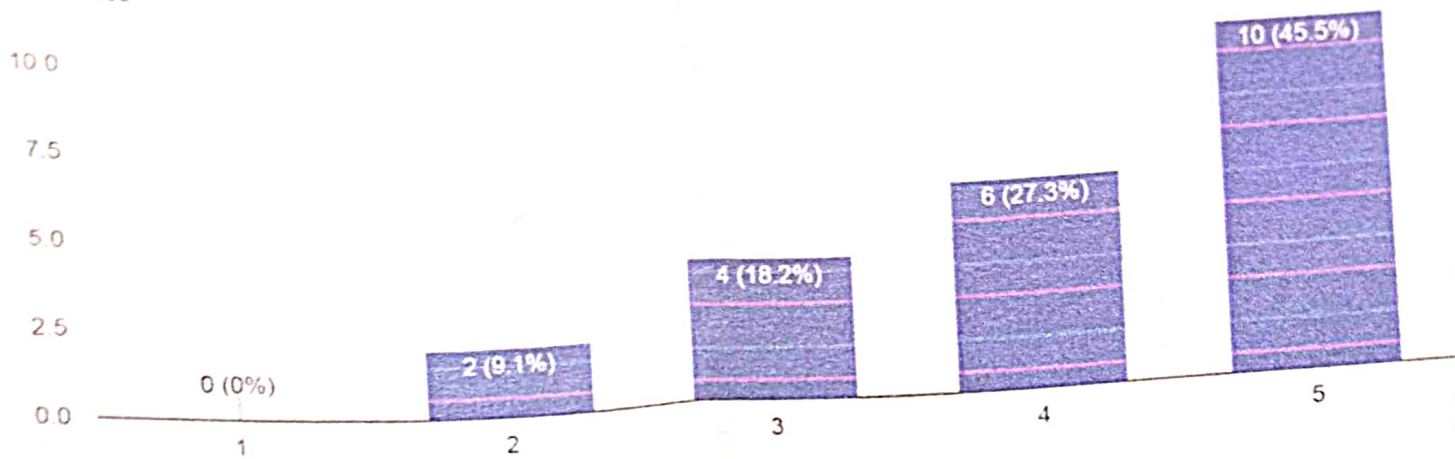
1. Parking facility

22 responses



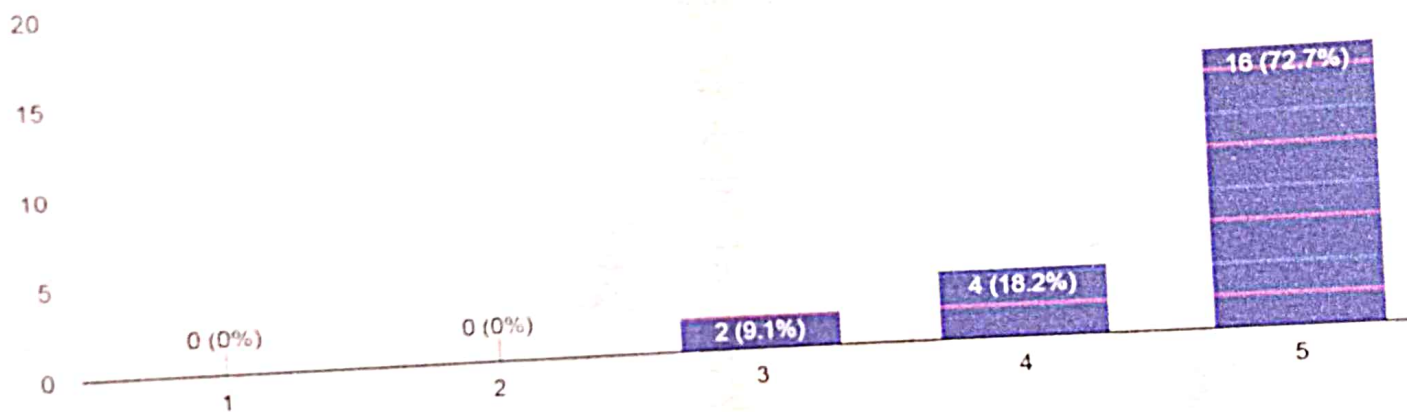
2. Cafeteria/Canteen facilities

22 responses



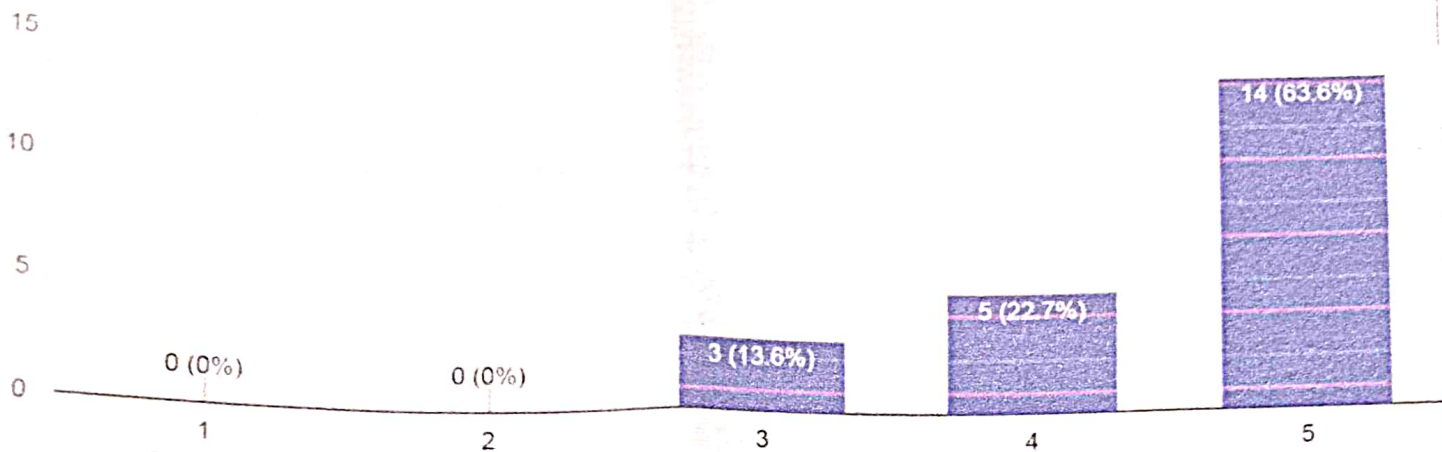
3. Library

22 responses



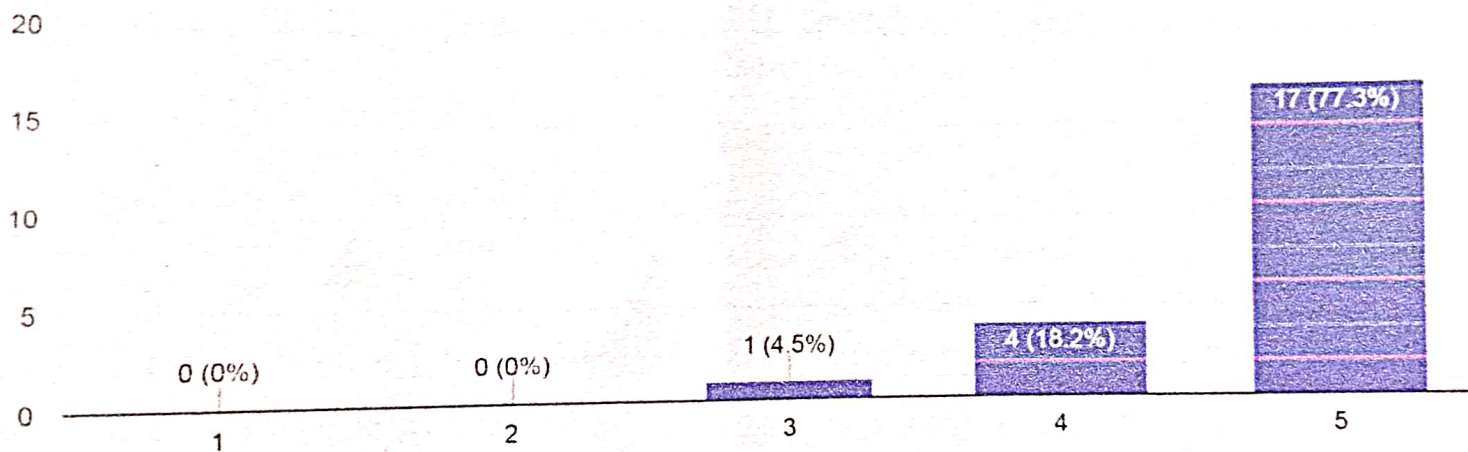
4. Power saving / generating

22 responses

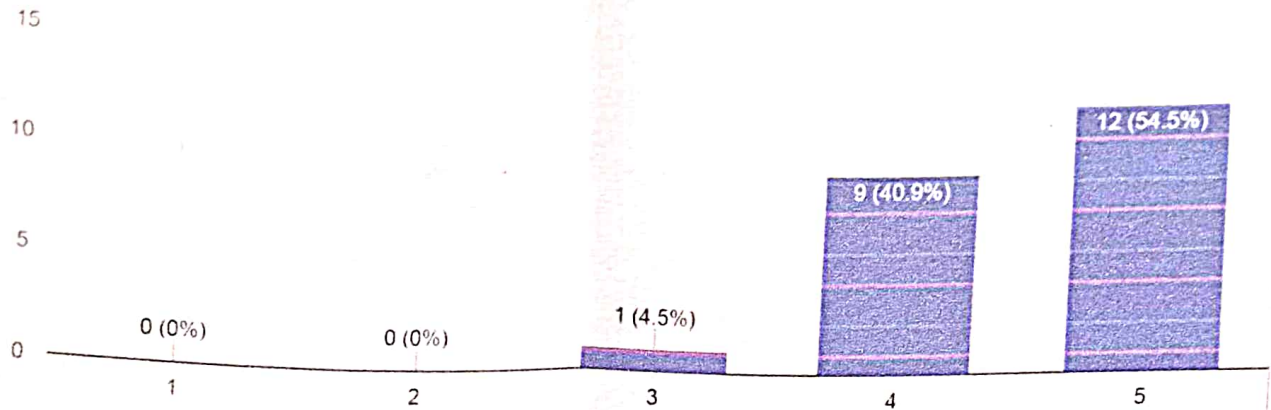


5. Cleanliness

22 responses



7. Overall improvement in infrastructure
22 responses



F) Kindly provide to us to do better

1) Mention at least four points which make you feel proud to be associated with APIMR

- 1) Supportive teaching and administrative Staff, Teaching staff motivates students It is always a great thing.
- 2) The infrastructure and its maintenance are great.
- 3) Providing great learning with enthusiasm.
- 4) Library and ample amounts of books.

Positive environment

Way of teaching and motivating students

Student and teacher interaction

Provides many opportunities for self-development

Gathering

Industrial Visit

Campus

Faculty

“Education is the key to unlocking the world, a passport to freedom” and that passport we get from the APIMR

A - Attention toward Studies

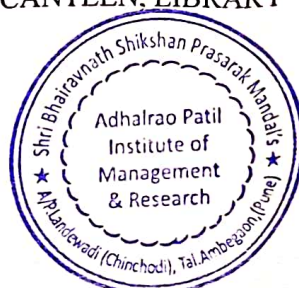
P - Practical to in activities

I - Improvement continuously

M - Management Perfectly

R - RESULTS Gives Success

FACULTY, INFRASTRUCTURE, CANTEEN, LIBRARY



APIMR Infrastructure
Staff cooperation
Staff Teaching Methodology

Best Lecturers
Best campus
Well guidance for subject
Nice atmosphere
Well and clean campus

Good college and staff and overall facility. Supportive, staff. And all activity implement my experience in this college is best.

Quality, Cooperation, discipline, Surrounding

2) Do you have any grievances with APIMR? If any please specify

Campus interview
Kindly update on Social media

3) Memorable moment/s in APIMR

Cultural program
Industrial visit
Camping of one week with Mr. Dev koli

GOA INDUSTRIAL VISIT AND ANNUAL FUNCTION OF BOTH YEAR

IV at Delhi in Assembly

Happy Diwali ☐ in APIMR

GUEST LECTURES AND EVENTS CONDUCTED DURING TWO YEARS.

All academic days are Memorable

4) Any other suggestion / Comments:

Overall experience is great at APIMR.

And support as per student ability is always provided.

Online activities can be increased and students participate in that, I think.

Thank you APIMR for overall wellbeing.



Provide innovative opportunities for students. Arrange mock interviews. Give chance to everyone to present their skills on stage so they can feel fearless. Measurement of strength and weakness of students it will helps to improve the potential of each student

Increase Phd Research Guide



Director

Shri Bhairavnath Shikshan Prasarak Mandal's
Adhalrao Patil Institute of Management & Research
A/P.Landewadi (Chinchodi), Tal.Ambegaon,Dist.Pune